



## Livingston County COVID-19 Report

Date of report: **3/26/21**

Date range used in report: **3/12/2021-3/25/2021**

This report provides a summary of COVID-19 trends and activities for Livingston County over the last two weeks; when appropriate, the previous two weeks are used as a comparison.

### Contents

SUMMARY.....	2
SNAPSHOT.....	3
Case Count.....	3
Hospitalizations .....	3
Deaths.....	3
Positivity Rate.....	4
Demographics .....	6
VACCINATION UPDATE .....	6
Populations .....	6
Coverage Metrics.....	7
NOTABLE EVENTS AND PRESS RELEASES .....	7
Events .....	7
Press Releases .....	7
RESOURCES.....	8
COVID-19 Testing Sites in Livingston County .....	8



## SUMMARY

COVID-19 cases reported in Livingston County, Michigan have again begun to rise at an alarming rate. This surge in cases is further confirmed by a test positivity rate that has almost doubled over the past month. With this surge in cases, COVID-19-related hospitalizations have once again increased. The Livingston County Health Department (LCHD) has additionally seen a recent rise in cases among school-aged children, as well as both club and school sports-related outbreaks. There is great concern about seeing a dramatic rise in cases after the Spring Break holiday given increased travel and gatherings, with the potential to place in-person schooling at risk.

The Livingston County Health Department has identified multiple cases of COVID-19 B.1.1.7 (also known as the “UK Variant”) in Livingston County. The B.1.1.7 variant is more transmissible than the common strain of COVID-19 and could be fueling the recent spike in cases in Livingston County. This means that it can more easily be transmitted between individuals. With a rise in COVID-19 cases again comes the risk of hospitalizations and deaths. LCHD is working with community partners and local laboratories to increase access to COVID-19 testing for Livingston County residents. Especially with Spring Break around the corner, LCHD encourages anyone who has symptoms or who has had a recent exposure to an individual with COVID-19 to seek testing.

With the arrival of multiple COVID-19 vaccines, there is hope on the horizon for the end of the pandemic. More vaccines have recently been available to Livingston County residents thanks to a combined effort between LCHD, local healthcare partners, and multiple pharmacies. LCHD would additionally like to thank Chilson Hills Church for their partnership in allowing LCHD to expand vaccination clinics. Even with the COVID-19 vaccine becoming more readily available, the fight against COVID-19 isn't over. Slowing the transmission of COVID-19 in Livingston County will still require community teamwork. LCHD reminds residents to continue to practice hand hygiene, mask wearing, and social distancing. Without these efforts, Livingston County is likely to continue to see a surge in cases, hospitalizations, and deaths.



## SNAPSHOT

### Case Count

Over the past two weeks, there were 896 total cases (average of 64 cases per day). This is 74% increase when compared to the previous two-week report period in Livingston County.

	2/26-3/11	3/12-3/25
<b>Total Cases</b>	515	896
<b>Confirmed</b>	400	742
<b>Probable</b>	115	154

There are two classifications of cases that make up the total number of COVID-19 cases; confirmed cases and probable cases. The case count above includes both.

- *Confirmed cases are people who had a nasopharyngeal COVID-19 PCR test that was positive.*
- *Probable cases are people who have COVID-19 symptoms and are close contacts of someone who has COVID-19, but did not have a PCR test done. If someone has a positive rapid COVID-19 antigen test (as well as COVID-19 symptoms and/or are a close contact of a COVID-19 case), they are reported as a probable case, because they did not have a COVID-19 PCR test done. The COVID-19 PCR test is the most sensitive COVID-19 test and is most likely to correctly diagnose an active COVID-19 infection.*

### Hospitalizations

Over the past two weeks, there were 12 new hospitalizations. This is a stark increase compared to the previous two-week period (6 hospitalizations).

	2/26-3/11	3/12-3/25
<b>New Admissions</b>	6	12

### Deaths

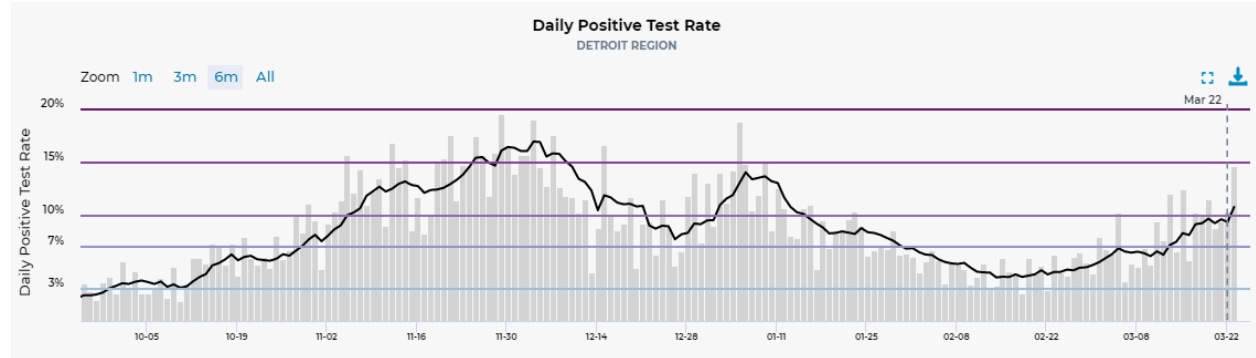
Over the past two weeks, there were 2 deaths in Livingston County. To present, there have been 153 deaths in Livingston County. The table below shows the number of deaths per month.

	January 2021	February 2021	March 2021 (3/1/21-3/25/21)
<b>COVID-19 Related Deaths</b>	23	24	3



### Positivity Rate

The current test positivity rate in Livingston County is 9.3%. The positivity rate in Livingston County has sharply risen from mid-February (5.3%). The local rate in Livingston County is marginally higher than the State of Michigan (8.9%).



*The positivity rate represents the percentage of all COVID-19 tests that have come back positive over a certain period of time. The positivity rate depends on the number of COVID-19 cases in a community and the total number of tests that were done. The rate can be high if there are more COVID-19 cases and there is increased spread of COVID-19 in the community; it can also be increased if there are not enough tests being done in the community. Health departments have adopted the goal of achieving a positivity rate to be less than or equal to 3%.*

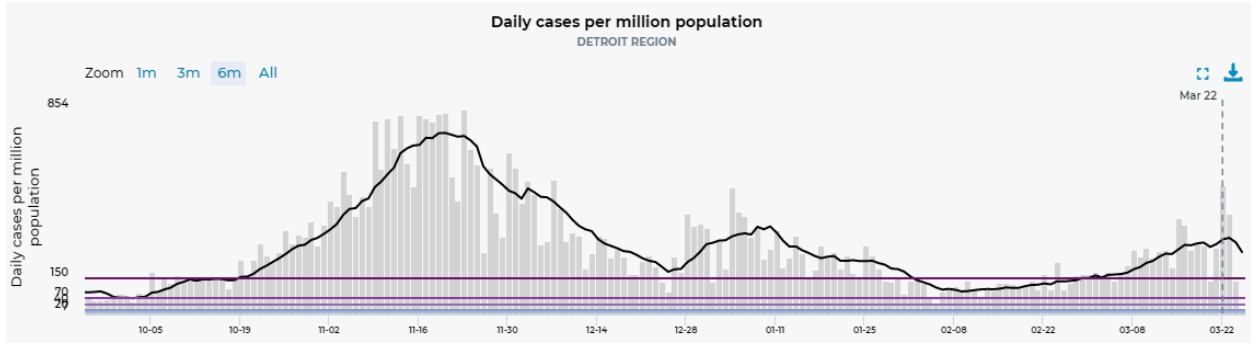
$$\text{Positivity Rate} = \frac{\text{Positive COVID-19 Tests}}{\text{Total COVID-19 Tests}} \times 100\%$$



### Epi Curve

In Livingston County, there are currently 313.7 daily cases per million. This reflects a significant uptrend of cases seen in mid-February, when there were 79.5 cases per million.

Livingston County remains in the highest risk category, “E”, similar to neighboring counties in the Detroit region.



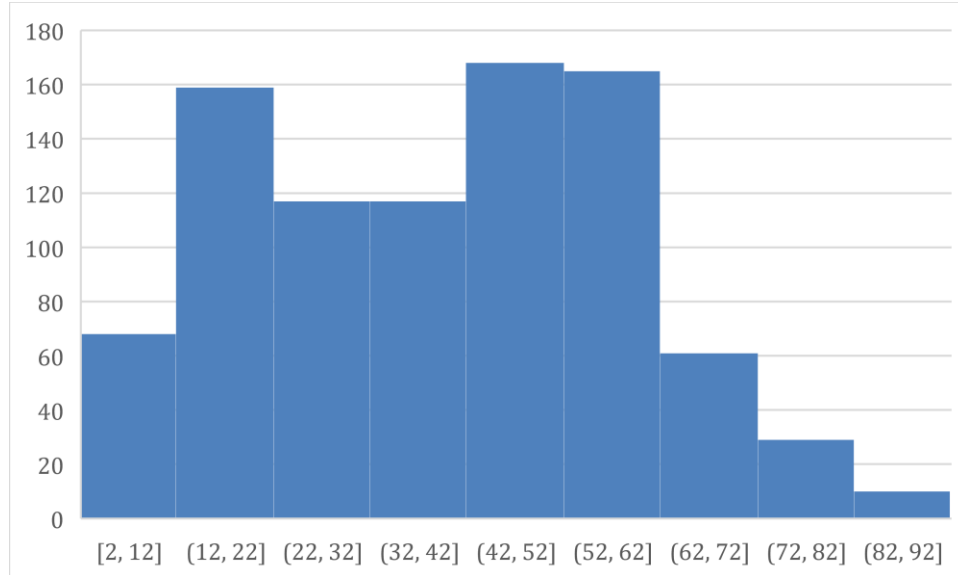
*An epi curve is a way to visually show the onset of cases in a community during an outbreak. It shows us how many COVID-19 cases had the onset of symptoms on each day over a period of time. It is a way to illustrate the spread of COVID-19 in the community and how the number of cases has been trending.*



## Demographics

### Age

The ages of individuals with confirmed or probable COVID-19 shows two modes from 10-20 years and 40-60 years. The average age is 40 years.



## VACCINATION UPDATE

### Populations

Livingston County Health Department is currently offering COVID-19 vaccinations to the following priority groups:

- Essential workers in Phase 1A and some workers in Phase 1B
- Individuals over the age of 65
- Individuals with disabilities/pre-existing conditions who are over the age of 50

As vaccine supply increases in Livingston County, vaccination appointment offering will expand to other eligible groups. Other populations who are currently eligible for vaccine in the State of Michigan include:

- Individuals age 16-49 with physical, intellectual, and developmental disabilities
- All individuals age 50 and above (regardless of pre-existing conditions)
- Caregivers of individuals with physical, intellectual, and developmental disabilities



### Coverage Metrics

Metrics collected from the MDHHS COVID-19 Vaccine Dashboard (<https://bit.ly/39fQVxp>) as of March 23, 2021.

	Residents Vaccinated	Vaccination Coverage (% of Residents Vaccinated)
State of Michigan – All Ages	2,400,319	29.6%
Livingston County – All Ages	38,796	24.7%
State of Michigan – 65+	1,136,595	64.4%
Livingston County – 65+	18,895	55.0%

### NOTABLE EVENTS AND PRESS RELEASES

#### Events

- COVID-19 Vaccine Clinics with 65+ population and Livingston County K-12 educators
- New and Ongoing Outbreaks in multiple Private and Public Schools
- New and Ongoing Outbreaks in multiple Club and School sports

#### Press Releases

- Livingston County Health Department Identified COVID-19 Variant Strain <https://bit.ly/3vZgeh1>
- New Drive-Thru COVID-19 Testing Site in Brighton to Provide Saliva Testing <https://bit.ly/3IY51c8>



## RESOURCES

### *COVID-19 Testing Sites in Livingston County*

If you are asymptomatic, please verify with the testing location that they are testing asymptomatic individuals prior to arrival at the testing location.

#### LynxDx at 24 | 2 Church

7526 Grand River Ave Brighton, MI 48114

Testing available on Monday and Friday

Phone: 734-212-6561

Schedule online at: <https://bit.ly/3rroR0v>

Saliva-based testing available! No nasal swab!

#### IEP Healthy Urgent Care

Healthy Urgent Care Brighton

8273 Grand River Ave #140 Brighton, MI 48114

Phone: 810-588-6610

Schedule online at: <https://bit.ly/39jV97h>

#### IHA Urgent Care East Brighton Fever and Upper Respiratory Illness Clinic

5505 S. Old US 23 #200 Brighton, MI 48116

Phone: 810-494-6810

Schedule online at: <https://bit.ly/3tU7GpS>

#### CVS Health COVID-19 Drive-Through Testing Site

5757 Whitmore Lake Rd Brighton, MI 48116

Phone: 866-389-2727

Schedule online at: <https://bit.ly/3sr1aqp>

For more testing locations in Michigan, visit: <https://bit.ly/2QG8ksS>

