

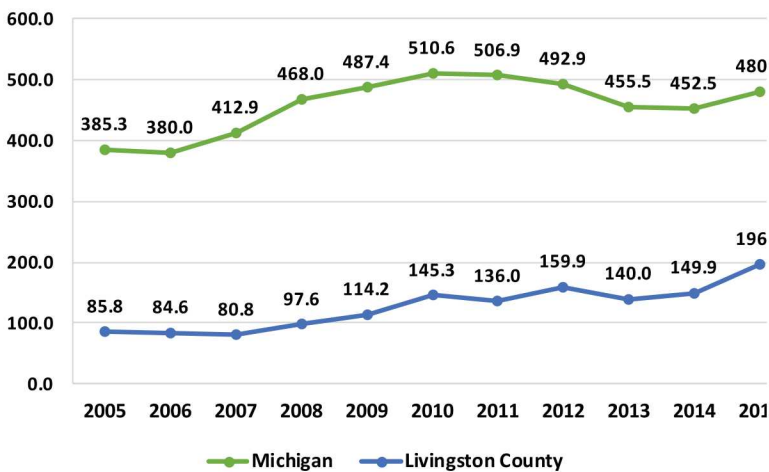
Sexually Transmitted Diseases

The Centers for Disease Control and Prevention estimates that nearly 20 million new sexually transmitted infections occur every year in the United States, half are among young people aged 15–24. In addition, persons with STD's are at risk for acquiring and transmitting HIV infection. Sexually transmitted diseases (STDs) can lead to chronic pain and severe reproductive health complications, such as infertility and ectopic pregnancy. Despite recent declines in Michigan, 2015 was the second year in a row in Livingston County in which increases were seen in all three nationally reported STDs, which include chlamydia, gonorrhea, and syphilis. Of the chlamydia, gonorrhea, and syphilis cases in 2015, 29% were in residents ages 15-19 years and 58% were in residents 20-29 years.

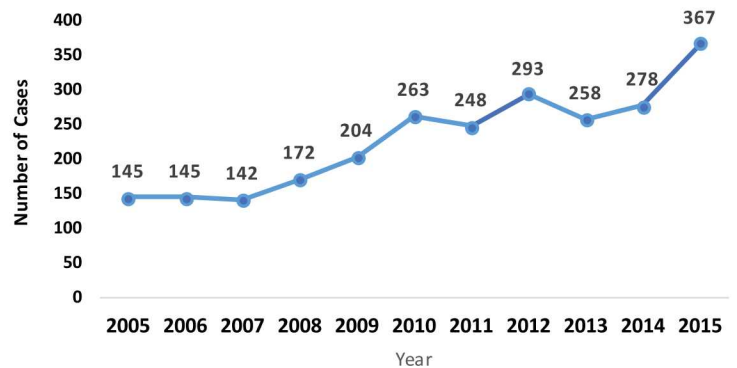
Chlamydia

Chlamydia is a common STD that can easily be cured. If left untreated, chlamydia can make it difficult for a woman to get pregnant. In 2015, the chlamydia rate in Livingston County was 196.7 per 100,000 people (367 cases). This is significantly lower than the Michigan chlamydia rate for the same year (480.7 per 100,000). However, a 10-year trend analysis shows that the Livingston County chlamydia rates have more than doubled with the largest growth appearing from 2014-2015 (149.9 and 196.7, respectively).

Michigan and Livingston County Chlamydia Rates, 2005-2015



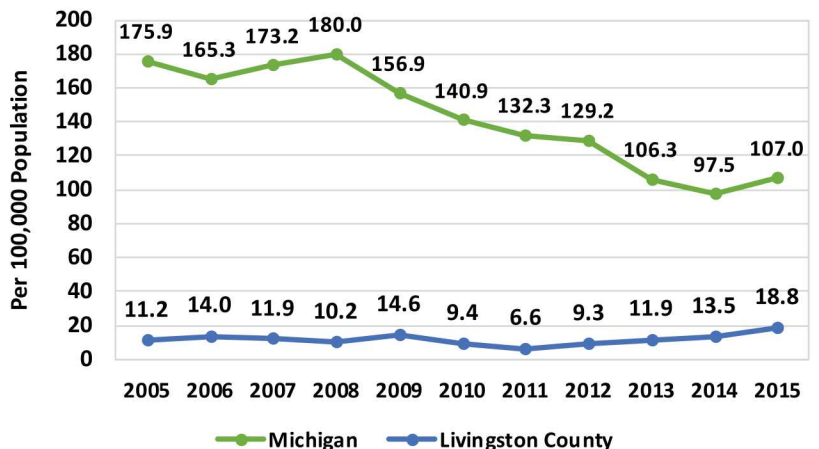
Livingston County Chlamydia Cases, 2005-2015



Gonorrhea

Gonorrhea can cause infections in the genitals, rectum, and throat. It is a very common infection, especially among young people ages 15-24 years. Gonorrhea can cause very serious complications when not treated, but can be cured with the right medication. In 2015, the gonorrhea rate in Livingston County was 18.7 per 100,000 people (35 cases). This is significantly lower than the Michigan gonorrhea rate for the same year (107.0 per 100,000).

Michigan Gonorrhea Rates, 2005-2015

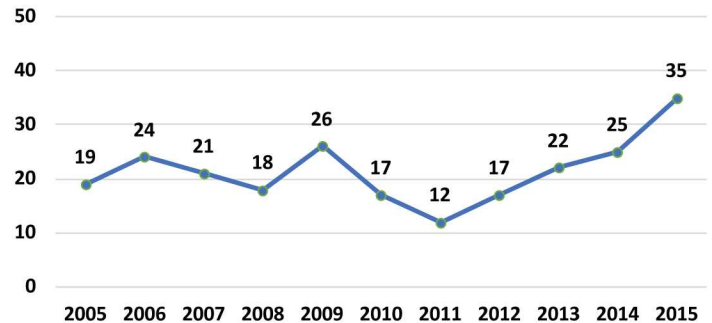


Sexually Transmitted Diseases

Gonorrhea-continued

While Michigan gonorrhea rates have declined in recent years, Livingston County rates have gone up. From 2011-2015, gonorrhea rates have steadily increased for the county, with the largest growth appearing from 2014-2015 (13.4 and 18.7, respectively). A 10-year trend analysis of Livingston County reveals fluctuations in gonorrhea cases from a low of 12 in 2011 to a high of 35 in 2015.

Livingston County Gonorrhea Cases, 2005-2015



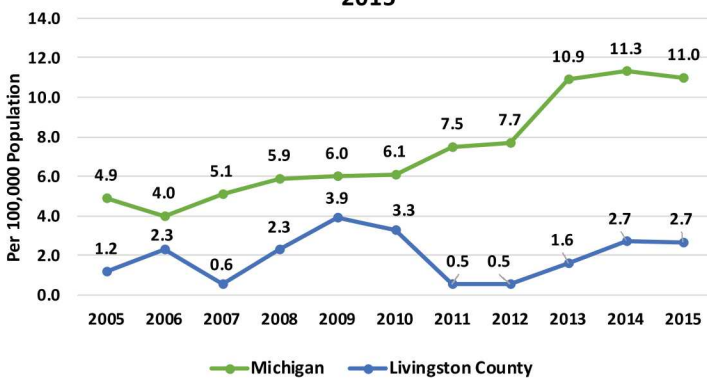
Syphilis

Syphilis is an STD that can have very serious complications when left untreated, but it is simple to cure with the right treatment. Syphilis is divided into stages (primary, secondary, latent, and tertiary), and there are different signs and symptoms associated with each stage. In 2015, the rate of syphilis in Livingston County was 2.6 per 100,000 people (5 cases). This is lower than the Michigan rate for the same year (11 per 100,000).

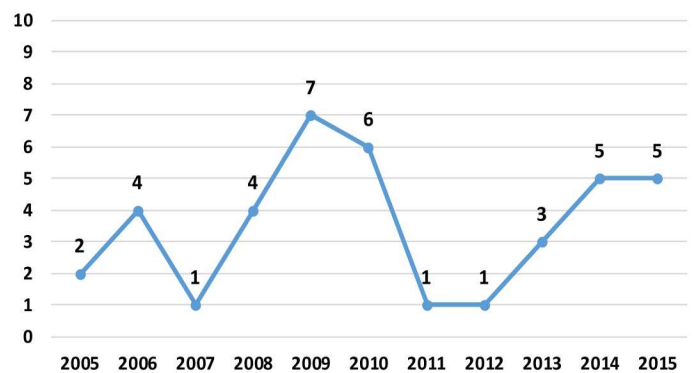
From 2005-2015, Livingston County has experienced fluctuation in the rates and numbers of syphilis cases. With the highest rate tipping in 2009 at 3.9 per 100,000 people (7 cases). Reported cases seem to have remained constant in recent years. While Michigan has seen an increase in syphilis over the same time period, the rates have stabilized since 2013.

Combined cases of chlamydia, gonorrhea, and syphilis are at a record high in Livingston County and the United States. According to the CDC, if you are sexually active, getting tested for STDs is one of the most important things you can do to protect your health. Please contact the Livingston County Health Department for more information on testing services.

Michigan and Livingston County Syphilis Rates, 2005-2015



Livingston County Syphilis Cases, 2005-2015



If you would like more information or to leave feedback, please visit: <https://www.surveymonkey.com/r/LivHealthFeedback>

